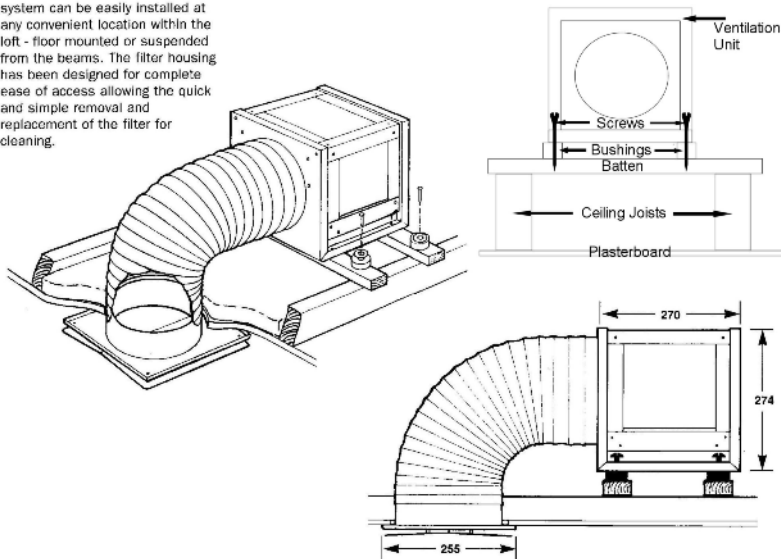




The electrical equipment contained in this box should not be disposed of in unsorted municipal waste but collected separately. This is intended to reduce the impact on the environment by minimising the level of waste generated at the end of a product's useful life by increasing the percentage of material recovered and recycled.

#### SENSORTRONIC 2000 MICRO ARIDAIR & SENSORTRONIC 2000 ARIDAIR

The Sensortronic® 2000 Aridair system can be easily installed at any convenient location within the loft - floor mounted or suspended from the beams. The filter housing has been designed for complete ease of access allowing the quick and simple removal and replacement of the filter for cleaning.



Regency House  
Kingsclere Park  
Kingsclere  
Newbury  
Berkshire RG20 4SW

Tel: 01635 299266

[www.ferrob.co.uk](http://www.ferrob.co.uk)

## Aridair M2000-NI Loft-Mounted Positive Pressure Unit



## Installation and Operation Instructions

**FERROB**  
ENVIRONMENTAL SYSTEMS

# INSTALLATION

The Aridair 2000 unit has been designed as a positive input system for houses with lofts to eradicate humidity, condensation and thereby prevent mould growth. The unit runs continuously on slow speed.

The supply diffuser from the unit should be mounted in a position to allow the air to be discharged as near to the centre of the property as possible but it must be at least 1m from any Smoke Detector unit.

**For further advice on installation, see the reverse of this leaflet**

Cut a 210mm hole in the ceiling of the landing / stairwell (or hallway if a bungalow) ensuring that the hole is between the joists.

Mount the Aridair unit in the loft adjacent to the hole, using the screws and rubber mountings supplied. (extra baton may be needed due to the width of the joists)

Fit the diffuser into the hole and join to the unit using the flexible ducting supplied and duct ties.

## ELECTRICAL CONNECTION

All wiring must comply with the latest edition of the IEE wiring regulations. If in any doubt, contact a registered or approved electrician.

A means for disconnection from the supply having a contact separation of at least 3mm in all poles must be incorporated into the fixed wiring.

The unit is rated at a maximum power consumption of 20watts.

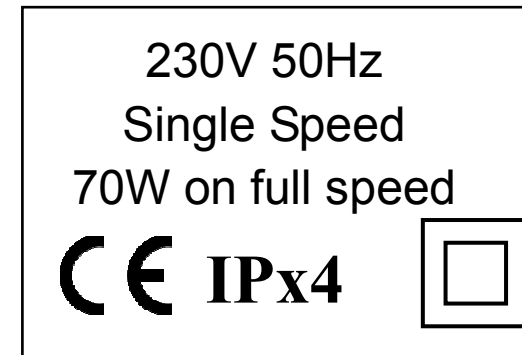
# OPERATION

The Aridair M2000NI inputs air into the property to gently pressurise it and thereby controlling humidity, condensation and mould growth.

When the unit is connected to a mains supply and turned on, after 5 minutes the fan will run at low speed continuously.

If the temperature in the loft space rises above 25 degrees or falls below 5 degrees the unit will not run on slow speed. It can still however be switched to run on boost speed.

Ferrob Ltd recommends that the unit is left on at all times and that the internal filter is regularly renewed. Replacement filter is available from Ferrob Ltd.



**This Product Requires an Earth Connection**