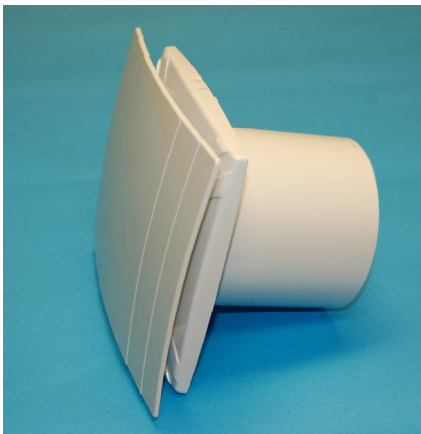


Ferrob Infinity 100 - Appendix Q approved

De-centralised Mechanical Extract Ventilation Fans (d-MEV)

100mm axial 230v / 12v

with Constant Volume and Gas Spillage safe



The Infinity100 is a continuously-running extract fan for kitchens and bathrooms and has been tested and approved to meet current **Appendix Q** regulations. The product is listed on the [SAP Appendix Q](#) website which lists approved products.

Designed for easy installation, attractively styled in high gloss ABS thermoplastics for modern appearance and ease of cleaning and incorporating the latest technology and design and maintenance free, self-lubricating motor bearings.

Upon installation, the fan needs to be set for its environment. By setting the

switch inside the unit to SLOW (bathroom), the fan will maintain the extract rate of 8l/s, or by setting the switch to MEDIUM (kitchen), 13l/s.

These are the required extract rates from the latest edition of the Building Regulations, Part F for continuous de-centralised mechanical extract ventilation, System 2.

If for any reason, the back-pressure on the fan increases (maybe because of wind resistance) the fan will automatically increase the fan speed to maintain the set extract rate.

The unit has a 'best-in-class' percentage in reduction of airflow when experiencing increased back pressures, as tested under the SAP Appendix Q conditions. (no more than 2% drop in airflow @ 5 Pa back pressure)

Where there is a danger of spillage from an open-flued appliance, the boost speed has been set to extract at 19l/s, thus eliminating the need for spillage tests to be carried-out. The unit has minimal energy usage by using as little as 1watt when running.

**Extract rates of
8 / 13 / 19 l/s**

Wall mounted

British made

**Designed to meet
the 2010 Building
Regulations on
Ventilation (F)**

**Tested to comply
with HD280/BS3456
Part 102:342 1988**

**5 year on-site
warranty**

**Meets current SAP
Appendix Q
approval**

**SFP rating as low as
.52 w/l/s**



Technical Data

Catalogue No.	Type
Infinity 100	Standard 230v 3-speed (adjustable) 100mm continuously running with integral pullcord boost
Infinity 100 Rem	Standard 230v 3-speed (adjustable) 100mm continuously running with remote switch boost
Infinity 100 H	Standard 230v 3-speed (adjustable) 100mm continuously running with humidity, pullcord or timer boost SAP Appendix Q listed with Constant Volume and Gas spillage functions as standard
Infinity 100 LV	Standard 12v 2-speed 100mm continuously running with either pullcord or remote switch boost To be installed into bathrooms to comply with Wiring Regulations. Runs on low speed (8 l/s continuous) and on boost speed (19 l/s) when activated using the pullcord or remote switch.

Construction	These fans are moulded in impact resistant high gloss ABS thermoplastics for strength, durability and finish.
Motor	Single phase induction motor with pre-oiled bearings fitted for a long maintenance free life and protected by a thermal fuse.
Guarantee	5 year on-site warranty.
Installation	Designed to be wall mounted. Wall kits comprise a wall sleeve (275mm long) and a fixed grille (white, terracotta, stone, grey or brown). Installation through a wall requires a 107mm hole or if using a high-rise internal cowl 117mm.
Performance	Extract rate of 70m ³ /hr, 19 litres per second on maximum speed. SAP ratings of .73 w/l/s on slow speed and .52 w/l/s on medium speed.
Additional Data	Maximum pressure: 50 p.a. Fan speed: 2400 r.p.m. Sound volume at boost speed: 40.0 dB(A). Maximum operating temperature 40°C. Protection Rating IPx4. Low speed – 8 l/sec, medium speed – 13 l/sec and full speed – 19 l/sec.